



## REGIONAL SPECIALISED METEOROLOGICAL CENTRE-TROPICAL CYCLONES, NEW DELHI TROPICAL WEATHER OUTLOOK

**DEMS-RSMC TROPICAL CYCLONES NEW DELHI DATED 17.10.2024**

**TROPICAL WEATHER OUTLOOK FOR NORTH INDIAN OCEAN (THE BAY OF BENGAL AND THE ARABIAN SEA) VALID FOR NEXT 168 HOURS ISSUED AT 0600 UTC OF 17.10.2024 BASED ON 0300 UTC OF 17.10.2024.**

### **BAY OF BENGAL:**

THE WELL MARKED LOW PRESSURE AREA OVER SOUTH COASTAL ANDHRA PRADESH & ADJOINING NORTH COASTAL TAMIL NADU PERSISTED OVER THE SAME REGION AND ASSOCIATED CYCLONIC CIRCULATION EXTENDED UPTO 5.8 KM ABOVE MEAN SEA LEVEL TILTING SOUTHWESTWARDS WITH HEIGHT AT 0300 UTC OF TODAY, THE 17<sup>TH</sup> OCTOBER, 2024. IT IS LIKELY TO MOVE WEST-NORTHWESTWARDS AND WEAKEN FURTHER INTO A LOW PRESSURE AREA DURING NEXT 06 HOURS.

A FRESH UPPER AIR CYCLONIC CIRCULATION IS VERY LIKELY TO FORM OVER NORTH ANDAMAN SEA AROUND 20<sup>TH</sup> OCTOBER. UNDER ITS INFLUENCE, A LOW PRESSURE AREA IS LIKELY TO FORM OVER CENTRAL BAY OF BENGAL AROUND 22<sup>ND</sup> OCTOBER, THEREAFTER, IT IS LIKELY TO MOVE NORTHWESTWARDS AND INTENSIFY FURTHER.

SCATTERED LOW AND MEDIUM CLOUDS WITH EMBEDDED INTENSE TO VERY INTENSE CONVECTION LAY OVER SOUTH BAY OF BENGAL AND ANDAMAN SEA (MINIMUM CTT MINUS 70-80 DEGREE CELCIUS). SCATTERED LOW AND MEDIUM CLOUDS WITH EMBEDDED MODERATE TO INTENSE CONVECTION LAY OVER WESTCENTRAL BAY OF BENGAL, GULF OF MARTABAN & TENASSERIM COAST.

### **\*PROBABILITY OF CYCLOGENESIS (FORMATION OF DEPRESSION) DURING NEXT 168 HRS :**

24 HOURS	24-48 HOURS	48-72 HOURS	72-96 HOURS	96-120 HOURS	120-144 HOURS	144-168 HOURS
NIL	NIL	NIL	NIL	NIL	NIL	LOW

**\*NOTE: EVERY 24HR FORECAST IS VALID UPTO 0300 UTC (0830 IST) OF NEXT DAY**

### **ARABIAN SEA:**

A CYCLONIC CIRCULATION LAY OVER NORTH LAKSHADWEEP & NEIGHBOURHOOD AT 5.8 KM ABOVE MEAN SEA LEVEL AT 0300 UTC OF TODAY, THE 17<sup>TH</sup> OCTOBER, 2024.

SCATTERED TO BROKEN LOW AND MEDIUM CLOUDS WITH EMBEDDED INTENSE TO VERY INTENSE CONVECTION LAY OVER EASTCENTRAL ARABIAN SEA (MINIMUM CTT MINUS 80-90 DEGREE CELCIUS). SCATTERED LOW AND MEDIUM CLOUDS WITH EMBEDDED MODERATE TO INTENSE CONVECTION LAY OVER SOUTHEAST ARABIAN SEA

& LAKSHADWEEP ISLANDS AREA AND WEAK TO MODERATE CONVECTION LAY OVER REST ARABIAN SEA & GULF OF CAMBAY.

**\*PROBABILITY OF CYCLOGENESIS (FORMATION OF DEPRESSION) DURING NEXT 168 HRS**

:

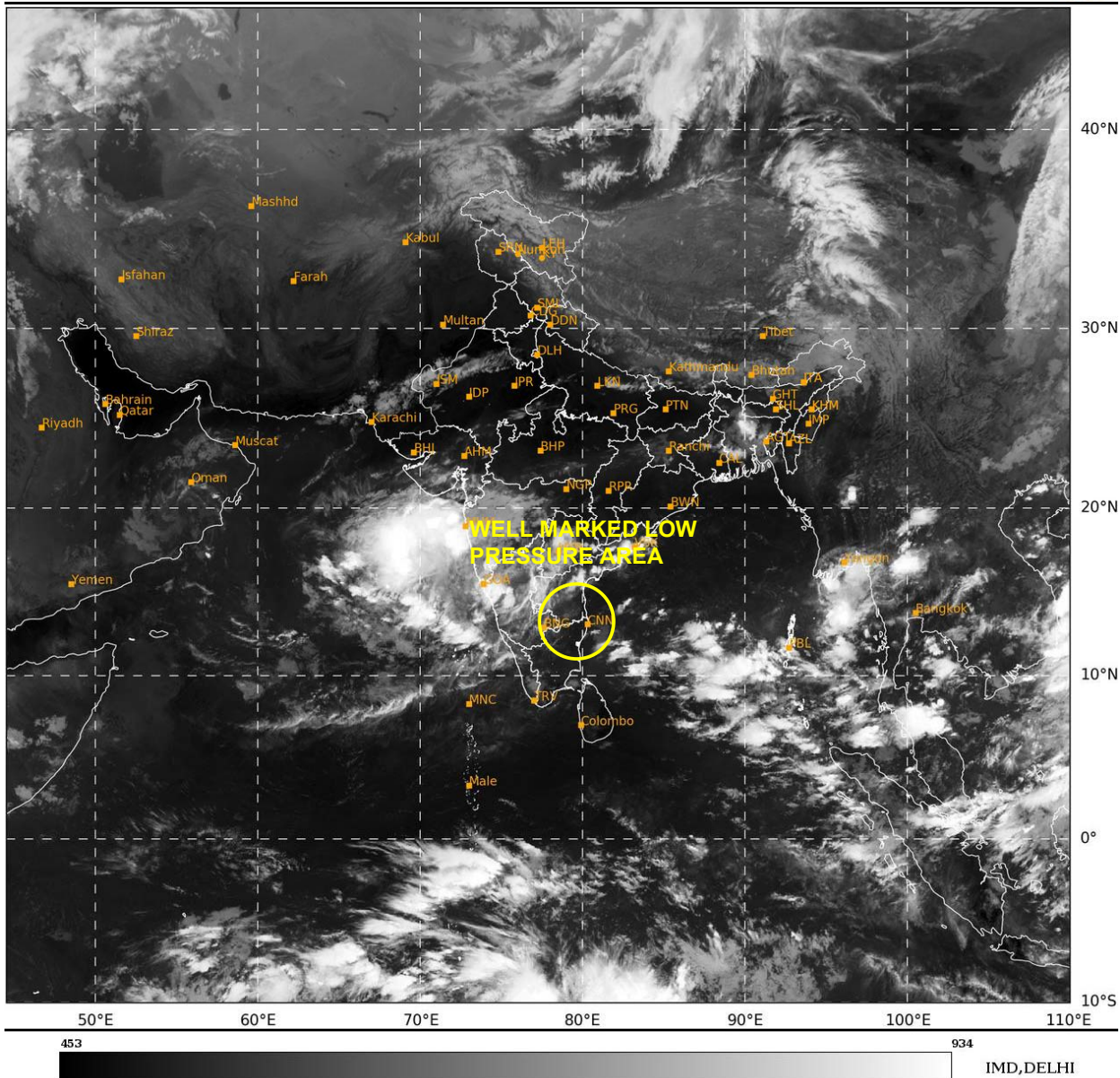
24 HOURS	24-48 HOURS	48-72 HOURS	72-96 HOURS	96-120 HOURS	120-144 HOURS	144-168 HOURS
NIL	NIL	NIL	NIL	NIL	NIL	NIL

**\*NOTE: EVERY 24HR FORECAST IS VALID UPTO 0300 UTC (0830 IST) OF NEXT DAY**

**REMARKS: NIL**

SAT : INSAT-3DR IMG  
 IMG\_TIR1 10.8 um  
 L1C Mercator

17-10-2024/(0315 to 0342) GMT  
 17-10-2024/(0845 to 0912) IST



Cloud distribution: (a) Isolated: <25%, Scattered:25-50%, Broken: 51-75%, Solid:>75%, Convection Intensity: (a) Weak: Cloud Top Temperature (CTT) >-25°C, (b) Moderate: CTT: - 25°C to -40°C, (c) Intense: CTT: - 41°C to -70°C and (d) Very Intense: : Less than -70°C  
**PROBABILITY OF CYCLOGENESIS (FORMATION OF DEPRESSION):NIL: 0%, LOW: 1-33%, , MODERATE: 34-66% AND HIGH: 67-100%**  
 This is a guidance Bulletin for WMO/ESCAP Panel Member countries. Visit respective National websites for Country specific Bulletins